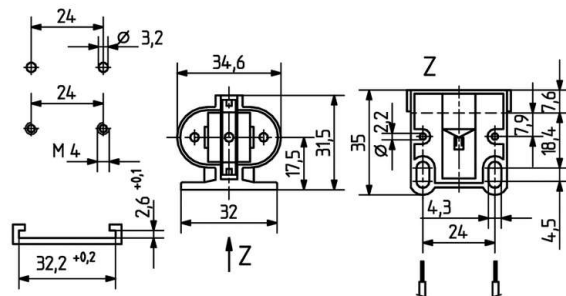


 Create pdf

## Lampholders for compact fluorescent lamps

26.719.4708

G23



colour	pkg.	wt.	part no.
white	250	11 g	26.719.4708.50

Approval: additional cULus

Wiring: rear entry wiring




For lamps TC-S

Push in fixing

Screw fixing horizontally

Housing: PBT

- Screw fixing: long holes:  $\varnothing$  4.5 x 4.5 mm for screws ISO 1207 - M4
- Holes:  $\varnothing$  2.2 mm for self-tapping screws with locating groove ISO 1481 - ST 2.9 - F/ ISO 4753 - SC
- Into locating grooves in fixing plate

T 140		 0.5 - 1.0 mm <sup>2</sup>	 18 AWG 0.5 - 1.0 mm <sup>2</sup>
-------	---	--	--

Document generated on: We, 8. February 2017 - 14:34